

*

17-39.

(1)
(2)

7가 , 39

19 24
가 ' + ' 가 20
60% 가 , 가
, 24 가 가

가 ,
가 ,
가

3가

, 6 가
(vocalization)

(Ninio & Snow, 1996). 8- 10

가 가 ,가 ,

가 가

(illocutionary acts),
(verbal)

(Bates, Camaioni & Volterra, 1975).

가,
가
Ninio & Snow, 1996).

(Bates, 1976; Bates, Camaioni & Volterra, 1975;

, (mode)

가

. Ninio & Snow(1996)

가 . (intentionality), 가

(conventionally),

가 가 .

가 (conversational context) 가

(Owens, 1999). Dore(1974)

9가 . Coggins & Carpenter(1981)

7가 , - ,

3가 .

, Dore(1978) 38 , Tough(1977) 37 , McShane(1980)

16 .

가 가 , 가 가 가

(Owens, 1999; Ninio & Snow, 1996; Dore, 1974, 1978). / ,

, / , / , / / 24 ,

(detailing), (predicting),

, 가

(Owens, 1999).

Carpenter, Mastergeorge & Coggins(1983) Coggins & Carpenter(1981)

6 8 15

, , , , , ,

. ' + ' . Ninio & Bruner(1976) 8

16 ,

가 , 14

10 15

Bates, Camaioni & Volterra(1975)

가 . Dore(1974)

. Warren

& Yoder(1998)

. Thal & Tobias(1992)

(nonsymbolic)

(Aeredolo & Goodwyn, 1988; Gopnik & Meltzoff, 1986; Thal & Bates, 1988; Thal, Tobias & Morrison, 1991).

가

가가

가

. Warren & Yoder(1998)

가

, (1)

, (2)

1.

(가 , 1996)

5

19

, 20

가

2.

19

24

6

, 1

40

가 one-way mirror가

가
가 가

3.

가 (:
(가)'; 2).
(context)
(Carpenter, Mastergeorge & Coggins, 1983).

- (1)
- (2) (contact)
- (3) 가 3

Dore(1978)
(requests), (responds), (comments), (statements),
(acknowledge), (organization devices), (advanced speech acts)
7가
(/ , , ,), , ,
(/ , / , ,), (, , /), , 가
/ , (properties),
, , 가 , ,
, , 가, (internal reports), , ,
, , / , /

(speaker selections), (accompaniments),

< - 1> ' Dore(1978) 7가

(rhetorical question), (boundary markers) (politeness markers)

가 6

'(gesture/vocal), '(verbal) / '

가 (Ninio & Snow, 1996).

'(< - 2>)

(: " ") 10%

4.

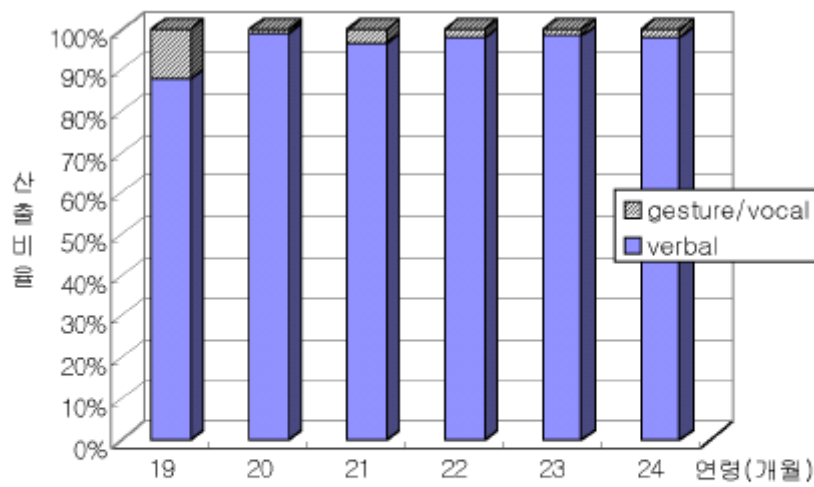
가 < - 1>

가 가 가 99% , 98%

1.

(%) < - 1> . 19

가 12% 가 , 20 4%



<그림 - 1> 의사소통의도 산출양식

< - 1>

2.

가.

(, , , , ,)

< - 1> < - 2> .

24

, 19

60%

, 24

가

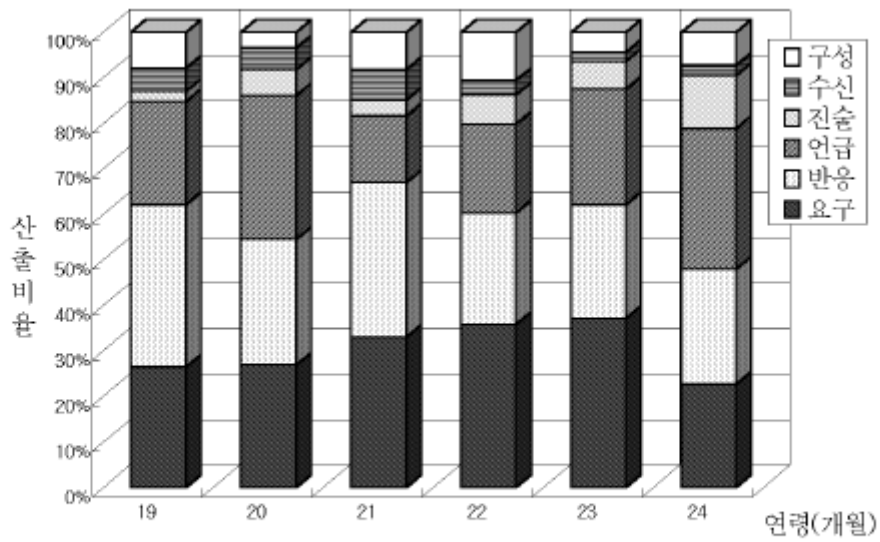
45%

가

, 19

< - 1 >

	19	20	21	22	23	24
	56	69	93	101	149	62
	77	71	96	69	100	69
	49	81	41	55	102	84
	5	15	10	18	24	32
	11	12	19	9	8	6
	17	9	23	30	18	20
	215	257	282	282	401	273



<그림 - 2> 의사소통의도 상위범주별 산출비율

< - 2 >

가 가 , 20 가 가
 . , 19 23 가
 . , 가 가 . 24
 , 가 가 가
 , 24 가 . 19

(1)

가 < - 2> . 19 (/
 , , ,), ,
 . /
 가 가 .

< - 2>

	/						
19	13	7	13	2	10	9	2
20	1	1	7	0	43	17	0
21	13	2	43	0	21	14	0
22	14	3	45	0	33	6	0
23	42	12	32	1	29	26	7
24	12	16	11	0	7	13	3
	95	41	151	3	143	85	12
	290				143	85	12

(2)

< - 3> . 19 가
 . 가
 가 ,

< - 3>

	/	/	/			/		
19	24	1	5	3	12	11	21	0
20	21	1	11	6	5	1	24	2
21	30	4	11	13	13	5	20	0
22	14	0	3	13	3	3	33	0
23	35	0	11	14	10	3	27	0
24	34	3	9	6	4	6	8	0
	158	9	50	55	47	29	133	2
		217			131		133	2

(3)

, 19, 20
가
22 가 (: ' '),
24 가
19
(: ' ', ' '), 가 (< - 4>).
가 가 , 24
(' ')가 (< - 3>).

(4)

19, 3가, 가
, 가 20 (:
', ';), 21, 22 6
(: ' '; , ' ');
). 가 22 (: 가
' '). 24
(: 가 , ' , , ' ').
가 가 가
(< - 4>).

< - 4>

	.						
19	17	21	9	0	0	2	0
20	0	31	26	0	0	23	1
21	3	4	28	0	0	6	0
22	5	21	18	4	0	6	1
23	8	31	42	0	0	13	8
24	8	12	39	2	0	22	1
	41	120	162	6	0	72	11

< - 5>

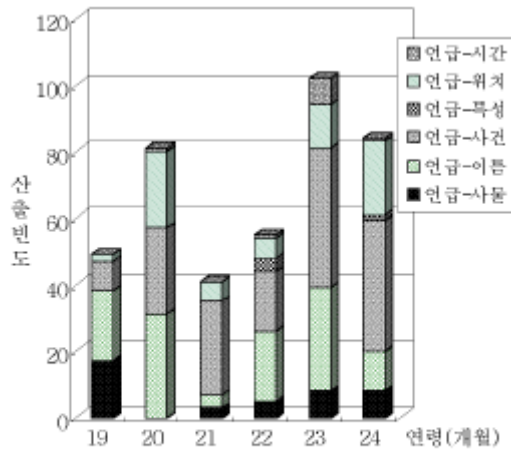
	가						
19	3	0	1	1	0	0	
20	0	0	6	7	2	0	
21	1	0	7	2	0	0	
22	2	2	8	1	6	0	
23	1	1	5	7	10	0	
24	2	0	7	3	15	4	
	9	3	34	20	33	4	

(5)

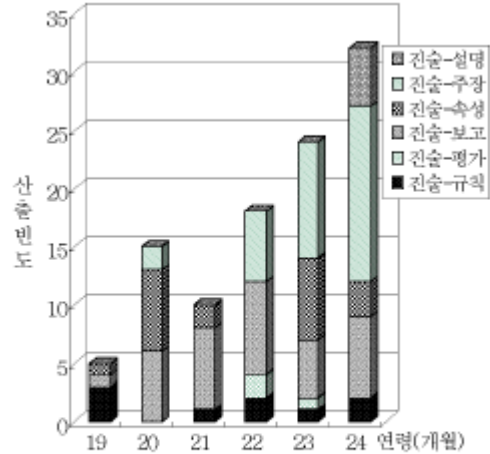
(: 가 , ; ' ') / (: ; ' ' , ; ' ') , / .

(6)

!).



<그림 - 3> 객관적 언급 하위범주 산출양상



<그림 - 4> 주관적 진술 하위범주 산출양상

< - 6 >

	/ /							
	19	4	7	0	0	16	0	1
20	8	4	0	3	1	0	5	0
21	15	4	0	0	4	0	6	13
22	4	5	0	1	8	0	12	9
23	8	0	0	6	11	0	9	3
24	4	2	0	2	12	0	4	2
	43	22	0	12	52	0	37	27

.
 , 19 24 /
 . 19 12% , 4%
 . , 20
 . 16 '

' + '
 (Carpenter, Mastergeorge & Coggins, 1983; Coggins & Carpenter, 1981; Ninio & Bruner, 1976; Bates, Camaioni & Volterra, 1975), 16
 ' + ' (Capirci et al., 1996; Wetherby et al., 1988).

19 가
 , 가
 가 가
 . 23 가 50-60%
 , 24 45% ,
 가 , 가 / /
 / ,
 (Owens, 1999).

, 가
 가 가 , 19
 '() ()?' , 22 ' ' (:
 ' ?') , 23 ' ' (: ' ?')
 19 2 ,
 , 21

가 가 . Wetherby et al.(1988)
 (11- 14) , (15- 19) (24- 27)
 , 24
 , 19
 . Wetherby et al.(1988)
 , 가 , 19

21 ()
), 22 ' , 24 ' , '(
) 가 . 20 ' , ' , 21
 ' , 22 ' 가(), 23 ' ' . 20
 ' '(), 22 ' ' , 23 ' ' , ' , 24 ' ' .
 ' , , . 22
 ' , ' ' , 23
 (: ,) 가 . 24
 (: ' ' , ' ' ' ') .
 , 24
 , , ' ' McShane(1980)
 ,
 / 19 ,
 . Coggins
 & Carpenter(1981) 15 16
 , , 가 , 가
 . 21 .
 ,
 가 .

가 (1996). 『 』 . : .
 Aeredolo, L. & Goodwyn, S.(1988). Symbolic gesturing in normal infants. *Child Development*, 59, 450-466.
 Bates, E.(1976). *Language and Context: Studies in the Acquisition of Pragmatics*. New York: Academic Press.

- Bates, E., Camaioni, L. & Volterra, V.(1975). The acquisition of performatives prior to speech. *Merrill-Palmer Quarterly*, 21, 205- 226.
- Capirci, O., Iverson, J. M., Pizzuto, E. & Volterra, V.(1996). Gesture and words during the transition to two-word speech. *Journal of Child Language*, 23, 645- 673.
- Carpenter, R. L., Mastergeorge, A. M. & Coggins, T. E.(1983). The acquisition of communicative intentions in infants eight to fifteen months age. *Language and Speech*, 26, 101- 116.
- Coggins, T. E. & Carpenter, R. L.(1981). The communicative intention inventory: A system for observing and coding children's early intentional communication. *Applied Psycholinguistics*, 2, 235- 251.
- Dore, J.(1974). A pragmatic description of early language development. *Journal of Psycholinguistic Research*, 3, 343- 350.
- Dore, J.(1978). Conditions for the acquisition of speech acts. In I. Markova(Ed.), *The Social Context of Language*. Chichester: Wiley.
- Gopnek, A. & Meltzoff, A.(1986). Relations between semantic and cognitive development in the one word stage: The specificity hypothesis. *Child Development*, 57, 1040- 1053.
- McShane, J.(1980). *Learning to Talk*. Cambridge: Cambridge University Press.
- Ninio, A. & Bruner, J. S.(1976). The achievement and antecedents of labelling. *Journal of Child Language*, 5, 1- 15.
- Ninio, A. & Snow, C. E.(1996). *Pragmatic Development*. Boulder, Colorado: Westview Press.
- Owens, R. E.(1999). *Language Disorders: A Functional Approach to Assessment and Intervention*. Needham Heights, MA: Allyn & Bacon.
- Thal, D. & Bates, E.(1988). Language and gesture in late talkers. *Journal of Speech and Hearing Research*, 31, 115- 123.
- Thal, D. J. & Tobias, S.(1992). Communicative gestures in children with delayed onset of oral expressive vocabulary. *Journal of Speech and Hearing Research*, 35, 1281- 1289.
- Thal, D. J., Tobias, S. & Morrison, D.(1991). Language and gesture in late talkers: A one year follow-up. *Journal of Speech and Hearing Disorders*, 34, 604- 612.
- Tough, J.(1977). *The Development of Meaning*. New York: Halsted Press.
- Warren, S. F. & Yoder, P. J.(1998). Facilitating the transition from preintentional to intentional communication. In A. M. Wetherby, S. F. Warran & J. Reichle(Eds.), *Transition in Prelinguistic Communication*. Baltimore: Paul H. Brookes.
- Wetherby, A. M., Cain, D. H., Yonclas, D. G. & Walker, V. G.(1988). Analysis of intentional communication of normal children from the prelinguistic to the multiword stage. *Journal of Speech and Hearing Research*, 31, 240- 252.

1. (interactional act)

- : (1)
- (2) (gestural/vocal) (verbal) (contact)
- (3) 가 3

2. 7

3. (communicative modes) " (vocalization)"

, " "

(jargon)

4. (calls)(: " ") 10%

5.

(Request):				C(child): " ?" M(mother): " "
	/	' / '		C: " ?"
				M"가 " C:" ?"
	*			C: () " ()?"
	(action)			C: () "가"
	(object) *			C: () ' '
	(permission)	가		C: (가) " ?"
(Response):	/		(, M	M: " ?" C: " "
	/ /		, C:)	M: " ?" C: " "
	/			M: " ?" C: " "
				C: " " M: " ?" C: " "
				M: " " C:
	/ *			M: " " C: " "
		가		M: " ?" C: " "
(ritual)			M: " " C: " "	
(Comment):	*			C: (가) " "
		(present)		C: () " "
	(events) ·	/		C: () " " C: () " ", () " "
	(properties)	가 (inherently) 가)	(, ,	C: () " "
	(functions)*	/		C: () " "
	(location)	/		C: (가) " "
	(times)	/		C: " ", " ", " "

	(rules)	/	C: "(-) "
(Statement): 가 , ,	가(evaluations)	가	C: " "
	(internal reports)		C: " , " "
	(attributions)	가	C: " , " " " "
		/	C: " " " "
		/	M: " ?" C: " " C: " "
(Acknowledge):	(acceptances)	/ ()	가 " (Oh)" ,
	(approval)/	/ 가 /	M: " " C: " "/" (sure)" "/" "
	(disapprove)/	/ 가 /	M: " " C: " "/" ()/" "
(Organi zation Device):			C: " "
			C: " "
			C: " 가 "
			C: ()" " , ()"
	*		C: (가) " "
(Advanced Speech Act):	(jokes)		" ()"
	(warning)	,	" , " "
	(teases)		" "

(Dore, 1978

*

가

)

			/	
(Request):	/	RqYe(-)		
		RqWh(-)		
		RqCl(-)		
	(confirming Q.)	RqCo(-)		
	(action req.)	RqAc(-)		
	(object req.)	RqOb(-)		
	(permission req.)	RqPe(-)		
(Response):	/	RsYe(-)		
	/	RsNo(-)		
		RsWh(-)		
	(clarification)	RsCl(-)		
	(compliances)	RsCo(-)		
	/ (protests)	RePr(-)		
	(repetitions)	RsRe(-)		
(ritual/returns)	RsRi(-)			
(Comment):	(objects.)	CoOb(-)		
	(identifications:label)	CoId(-)		
	(events) · (state)	CoEv(-)		
	(properties)	CoPr(-)		
	(functions)	CoFu(-)		
	(location)	CoLo(-)		
	(times)	CoTi(-)		

			/	
가 , , , ,	(rules)	StRu(-)		
	가(evaluations)	StEv(- 가)		
	(internal reports)	StIn(-)		
	(attributions)	StAt(-)		
	(claims)	StCl(-)		
	(explanations)	StEx(-)		
(Acknowledge):	(acceptances)	AcAc(-)		
	/ (approval/agreement)	AcAp(-)		
	/ (disapprove/disagree)	AcDs(-)		
(Organization Device):	(ritual greeting)	OdGr(-)		
	(calls)	OdCa(-)		
	(speaker selections)	OdSs(-)		
	(accompaniments)	OdAc(-)		
	(exclamation)	OdEx(-)		
(Advanced Speech Act):	(jokes)	AsJo(-)		
	(warning)	AsWa(-)		
	(teases)	AsTe(-)		

Rq: Request Rs: Response Co: Comment St: Statement Ac: Acknowledgement Od: Organization Devised As: Advanced Speech Acts

ABSTRACT

A Longitudinal Study of the Acquisition of Communicative Intentions

Gyung Hun Hong (Interdisciplinary Program of Communication Disorders,
Ewha Womans University)

Young-Tae Kim * (Dept. of Special Education & Interdisciplinary Program
of Communication Disorders, Ewha Womans University)

The present study aimed to (1) propose a system for observing and coding Korean children's communicative intentions covering from early to late language developmental stages and to (2) investigate the types and modes of communicative intentions from one-word to two-word utterance stages by using the system. The inventory of communicative intentions to code the children's intentional communication included request, response, comment, statement, acknowledgement, organization device and advanced speech acts which were further divided into a total of 39 subcategories. It was found that the "verbal" mode of communication was predominant, with dramatical decreasing of "gesture + vocal" mode of communication at the age of 20 months. In terms of the types of communicative intentions, "response" and "request" were produced most frequently in the earlier period. However, the proportions of "response" and "request" decreased and "comment" and "statement" increased as the age increased. The older children demonstrated varied modes of communicative intentions including all subcategories studied except for the functions of "disapproval," "disagreement," and "speaker selection."